



Resource Recovery & Waste Management

Capability Statement 2024-25

Delta Recycling Pty Ltd | ABN 84 007 069 801



SHAPING
TOMORROW

Acknowledgement of Country

Delta Recycling acknowledges First Nations Australians as the Traditional Owners of the land and sea upon which we work. We recognise their living cultural and natural landscapes and pay our respects to Elders past, present and emerging.

/ Proven Circular Economy Solutions

Delta Recycling is one of the largest processors of C&D waste streams in Australia and **diverts more than 2m tonnes** from landfill each year.

We are at the forefront of 21st century treatments and technologies that reduce our reliance on finite virgin construction materials by turning C&D waste streams into high quality, high value and custom engineered building materials.

2m

tonnes diverted from landfill

60+

crushers and screens

70+

bin truck fleet

90+

heavy vehicle fleet

Our industrial and commercial waste management and resource recovery capabilities comprise waste collection, processing, and secondary (reclaimed) materials production.

We process mixed and mono waste streams into sought after eco products and can offer customised materials management solutions to manage waste (including soil) more effectively.

We value our role in the circular economy and take great pride in our ability to partner with our clients to achieve their sustainability aims.

Delta Recycling is one of Australia's leading waste-to-product contractors, offering diversified and integrated contracting services, including skip bin hire, waste transfer stations, concrete recycling, contract crushing and screening, timber recycling, and scrap steel recycling.

SHAPING TOMORROW

Shaping tomorrow isn't easy. It's the culmination of what we started in 1988. It's a formula: concentrated engineering expertise, vision and the resources to deliver. It's fearlessly challenging structures, systems and mindsets to deliver for our clients. It's clearing a path for safety, innovation and growth. It's leaving a lasting impression on the landscape of progress. Shaping tomorrow isn't easy. Shaping tomorrow is in our DNA.

+ Our Vision

is to shape the industrial and urban landscapes of tomorrow

+ Our Mission

is to understand the project lifecycle better than any other contractor

+ Our Values



People first

No other business practice is more important than the safety of our people.



Think differently

Where others see obstacles, we see opportunities.



Dependable

We refuse to accept anything but the very best we can give to a client and their project.



Determined

We're not just responsible, we're accountable. Every one percent matters.

/ Core Capabilities

Materials Solution Management

- + Commercial waste/spoil management strategy development
- + Geotechnical site surveys and mapping (3D drone)
- + Earthmoving transport and logistics
- + Earthmoving equipment hire – wet and dry
- + Mixed excavation and C&D waste management
- + Onsite tipping and stockpile management
- + Contaminated soil classification and EPA licensed transport and disposal

Concrete Recycling

- + Dedicated (fixed) processing facility and plant
- + Certified weighbridge operations
- + C&D waste crushing and screening
- + VENM and ENM processing
- + Pug mill and load out to specification
- + Onsite independent NATA laboratory and testing



Where others saw mountains
of landfill, we saw the roads,
footpaths and building
materials of the future

/ Core Capabilities

Contract Crushing & Screening

- + Mobile crushing and screening - primary and secondary
- + Mobile pug mill
- + Overburden stripping
- + Load and haul
- + Site remediation
- + Landfill cell construction
- + Engineered capping
- + Project/site management

Fleet Management, Transport & Logistics

- + Company owned and operated fleet
- + Excavators, including long reach and telescopic
- + Loaders, Dozers, Graders, Rollers, Compactors
- + Dump Trucks - Rigid and Articulated
- + Tippers, Semi Tippers, Quad Dog Tippers, Prime Movers, Drop Decks, Tilt Trays
- + Water Trucks and Cannons



COMPANY & OPERATED OWNED FLEET



OVERBURDEN STRIPPING, LOAD & HAUL

/ Core Capabilities

Commercial skip bin hire

- + 2, 4 and 6 marrel skips
- + 6, 9, 12, 15 and 20 hook skips
- + Site/sand bins
- + Front and rear lift bins
- + Crane rated and crack tested skips
- + New generation bin truck fleet

Waste Separation & Transfer

- + Greenstar certified waste transfer facilities
- + Concrete, bricks, asphalt and dirt
- + Paper, cardboard and (soft) plastics
- + Steel – ferrous, non ferrous
- + Timber
- + Rubber and plasterboard
- + PVC Wiring



COMMERCIAL SKIP BIN HIRE



GREENSTAR CERTIFIED WASTE SEPARATION & TRANSFER

MATERIALS SOLUTION MANAGEMENT



FERROUS & NON FERROUS STEEL RECYCLING

/ Core Capabilities

Reclaimed building materials

- + NATA tested and certified eco-products
- + Class 2, 3 and 4 crushed concrete
- + General concrete aggregate
- + General and Gabion Fill
- + Road and sub-base material
- + Architectural and furniture grade timber
- + Timber Mulch

Sustainability Reporting

- + Climate-related financial disclosures
- + Scope 1 and Scope 2 CO2 emissions monitoring
- + NGERs, Greenstar and NABERS aligned reporting systems
- + Comprehensive waste stream tracking, docketing, tipping and invoicing systems
- + GPS vehicle tracking
- + Licensed landfill and cleanfill disposal



SUSTAINABILITY REPORTING



CLASS 2, 3 & 4 CRUSHED CONCRETE



/ Eco Products



Our comprehensive eco product range allows us to tailor site or project specific solutions as well as to support our clients as they strive to achieve their sustainability aims and strengthen their social licence to operate.

Delta Recycling produces VicRoads registered rock mixes and crushed concrete mixes and satisfies the rigorous criteria to comply with all specifications in accordance with the VicRoads Code of Practice. In doing so, our eco products are also compliant with Austroads and individual State/Territory guidelines.

Independent NATA Accredited laboratories analyse and certify all finished products to satisfy client specific QA requirements as well as to ensure VicRoads/Austroads specified requirements are met.

Envirocrete



Conforms to VicRoads Specifications 820 | 821

Onsite NATA laboratory and independent testing

APPLICATION

Road base and sub-base material, hard stand areas, backfill, bedding material

COMPOSITION

- + Concrete, brick, mixed concrete and brick
- + 20mm crushed concrete - class 2, 3, and 4
- + Wet mix (up to 12.5%)
- + Cement treated (up to 6%)

Envirobase



Conforms to VicRoads Specifications 820 | 821

Onsite NATA laboratory and independent testing

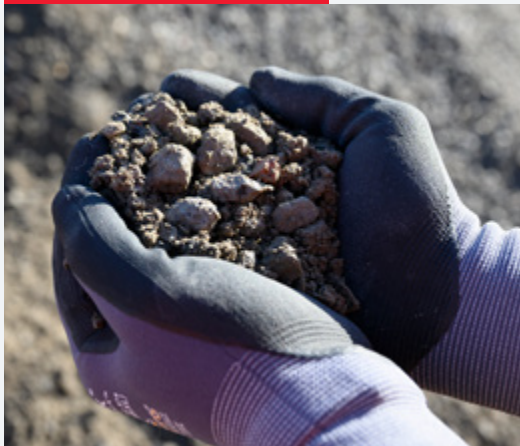
APPLICATION

Sub-base material, pavements, backfill, waffle pods, bedding material

COMPOSITION

- + Concrete, brick, mixed concrete and brick
- + 20mm crushed concrete - class 2, 3, and 4
- + Wet mix (up to 12.5%)
- + Cement treated (up to 6%)

Crushed Concrete



Conforms to VicRoads Specifications 820 | 821

Onsite NATA laboratory and independent testing

APPLICATION

Road base and sub-base material, hard stand areas, backfill, bedding material

COMPOSITION

- + Concrete, brick, mixed concrete and brick
- + 20mm crushed concrete - class 2, 3, and 4
- + Wet mix (up to 12.5%)
- + Cement treated (up to 6%)

High Spec Aggregates



Conforms to VicRoads Specifications 820 | 821

Onsite NATA laboratory and independent testing

APPLICATION

General concrete aggregate, landscaping, retaining walls, backfill (medium) pipes, drainage and filter

COMPOSITION

- + Recycled brick and concrete
- + Screened single and graded asphalt, soft rock
- + Concrete, sealing and drainage (to specification)
- + 20/14/10/7mm
- + Dust

Dust and rubbles



Conforms to VicRoads Specifications 812

Onsite NATA laboratory and independent testing

APPLICATION

General fill purposes as well as drainage, filters, gabion fill, haul roads and access tracks

COMPOSITION

- + Recycled brick, mixed brick and concrete, VENM and ENM
- + 80mm minus excavation rubble
- + 20/40mm minus crushed rock (to specification)
- + Class 2, 3 and 4
- + Wet mix (up to 12.5%)
- + Cement treated (up to 6%)

/ Contract Crushing & Screening

We have the people, plant and triple ISO certified quality, safety and environmental management systems to support the full outsourcing of highly specialist crushing and screening operations. Delta Recycling can manage all primary and secondary screening and crushing operations, including:

- + Mobilisation and site preparation
- + Permits and authorities
- + Site inductions
- + Stakeholder engagement
- + Stockpiling and testing of processed materials
- + Plant servicing and maintenance
- + Demolition and site clearing
- + Compliant volume measurement systems

Mobile Crushing & Screening Fleet

Our mobile crushing and screening fleet is meticulously maintained to exacting OEM standards as well as site specific requirements.

Sophisticated logistical and (on board) scale and telematic systems track the movement, loads and optimisation of more than 60 late model, new generation crushers, screens and conveyors.

With more than 35 high performance excavators and loaders, Delta Recycling also has the capability manage overburden stripping and load and haul operations.



/ Contract Crushing & Screening Portfolio

Hazelwood Power Station



/ ENGIE Australia

VOLUME 110,000t
SOURCE Structural Concrete Waste
APPLICATION Site remediation
PRODUCTS 37.5mm minus

Liddell Power Station



/ AGL

VOLUME 70,000m3
SOURCE Overburden
APPLICATION Engineered ash dam layer
PRODUCTS Rocks: <200mm
200-300mm
300-800mm
Oversize

Wollert Graded Aggregate Production



/ Boral

VOLUME 610,000t
SOURCE Quarry shot rock
APPLICATION Concrete aggregates
PRODUCTS 14/10/7mm graded
5mm dust
20mm NDCR

MRL Crush & Screen



/ Cleanaway

VOLUME 2,024,000t
SOURCE Overburden
APPLICATION Landfill cell construction
PRODUCTS 50mm clay
Engineered fill
Drainage aggregate

Deer Park Primary & Secondary Crushing



/ Boral

VOLUME 410,000t
SOURCE Quarry shot rock
APPLICATION Subgrade material
PRODUCTS 100mm NDCR

/ Skip Bin Hire

SKIPZ Recycling Joint Venture

Established in 2022, our joint venture with SKIPZ Recycling specialises in commercial skip bin hire operations across metropolitan Melbourne and Brisbane.

Delta Recycling and SKIPZ operate Greenstar certified recycling facilities that separate and classify waste streams to maximise resource recovery and minimise waste to landfill.

All SKIPZ and Delta Recycling facilities feature certified weighbridges and maintain fully auditable accounts of incoming and outgoing waste streams.

We employ a comprehensive waste docketing system, including records and reports to track all materials received, sorted and processed (including rejected loads).

- S** SAFETY
- K** KNOWLEDGE
- I** INTEGRITY
- P** PEOPLE
- Z** ZERO WASTE





/ Timber Recycling

Whelan the Warehouse

Whelan the Warehouse is an integral part of Delta Recycling and has built a strong reputation amongst Australia's leading builders, architects and interior designers for high quality, ethically sourced new and reclaimed timber.

Reclaimed timber is processed at the Whelan North Eden Mill on the South Coast of New South Wales and resold at our dedicated Port Melbourne retail and wholesale warehouse.

A team of qualified and experienced Joiners are on hand in Port Melbourne to create contemporary interior and exterior finishes, furniture and fittings. From custom stair treads to custom fit outs; kitchen and bathroom benchtops to machining and drum sanding; indoor and outdoor furniture to joinery – their craftsmanship has been applied across a range of commercial construction projects.

Salvaged timber that does not satisfy our strict quality standards and product specifications is chipped for mulch and used on Delta Group civil landscaping and regeneration projects

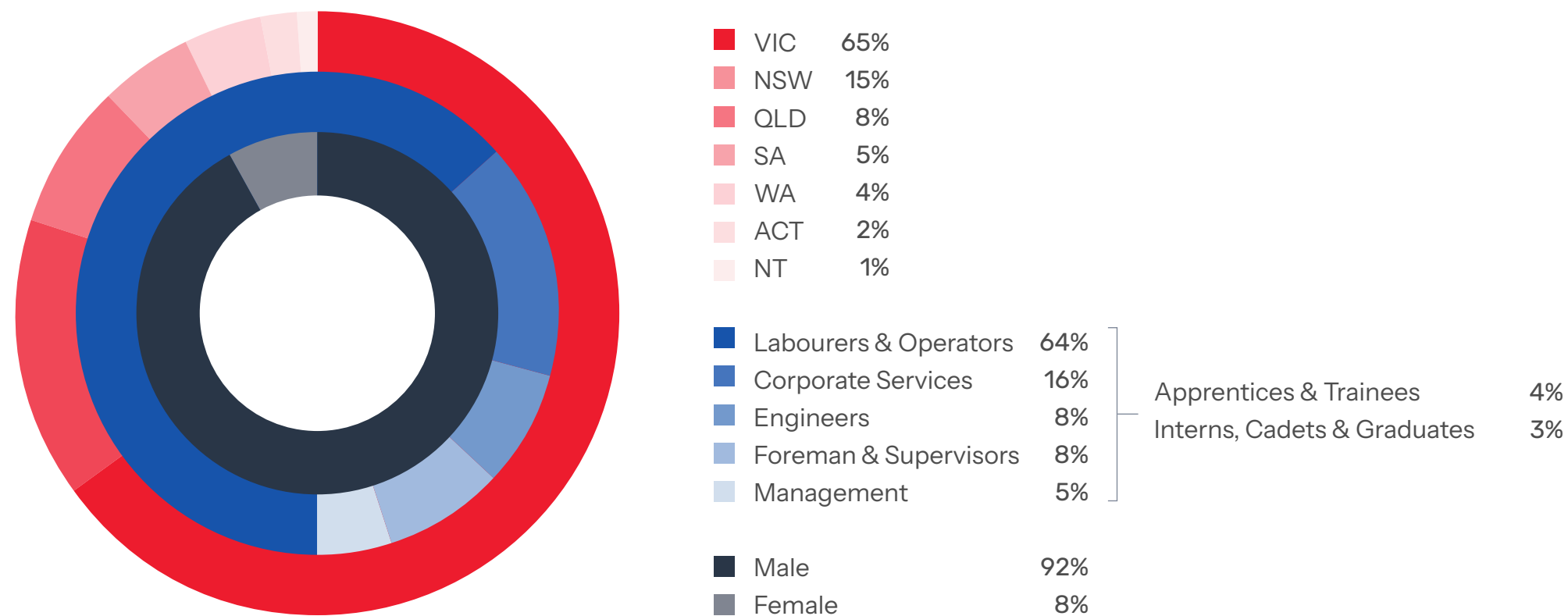
/ Sustainability

As a key division of Delta Group, we apply a triple bottom line approach to our environmental, social and governance (ESG) responsibilities and endeavour to integrate our policies, procedures and work practices across the business, including Delta Recycling.

Aspiring to achieve zero harm – to our people, our environment and the communities in which we work – is a fundamental driver of our business and why Delta Group invests heavily in maintaining our social licence to operate and to ensuring the work we undertake has a lasting local, social and environmental legacy.



/ Our People



Our people are what set us apart and why our clients trust us to deliver high risk, complex work programmes on time, on budget and without incident. They don't just benefit from exciting and diverse projects with blue chip clients, they benefit from a culture of collaboration and innovation that allows them to make the most of their remarkable skills and talent.

We appreciate the challenges facing the Australian construction industry in developing a more diverse workforce. Delta Group and all related entities are compliant with the Australian Workplace Gender Equality Act and our talent acquisition strategies are focused on increasing the representation of females at all levels and across all divisions of our business, as well as First Nations Australians, people living with disability, and individuals from entrenched disadvantage.

Con Petropoulos

Founder & Managing Director

Con founded Delta in the late 70s and has been relentless in his pursuit of innovation ever since, especially for better and safer work methods. Renowned for his leadership and the quality of his people, he is still 'hands-on' today in support of major projects, industrial relations and key client relationships.



/ Group Management



Mark Welsh
EXECUTIVE GENERAL MANAGER



Jason Simcocks
EXECUTIVE GENERAL MANAGER



Jatin Rangras
CHIEF FINANCIAL OFFICER



Dominic Santullo
GENERAL MANAGER RECYCLING & LOGISTICS



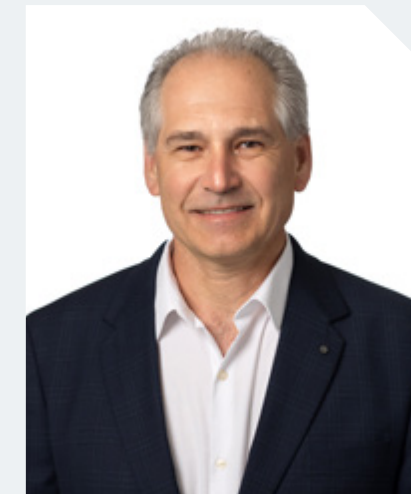
Jason Attard
GENERAL MANAGER CIVIL OPERATIONS (VIC)



Khaled Ayache
MANAGER DEMOLITION OPERATIONS (VIC)



Philip Agius
GENERAL MANAGER RENT



Danny Busatta
GENERAL MANAGER PRE CONSTRUCTION (VIC)

Delta Group have embedded social procurement practices and processes into our national operations, in accordance with Commonwealth, State and/or Territory policy frameworks.

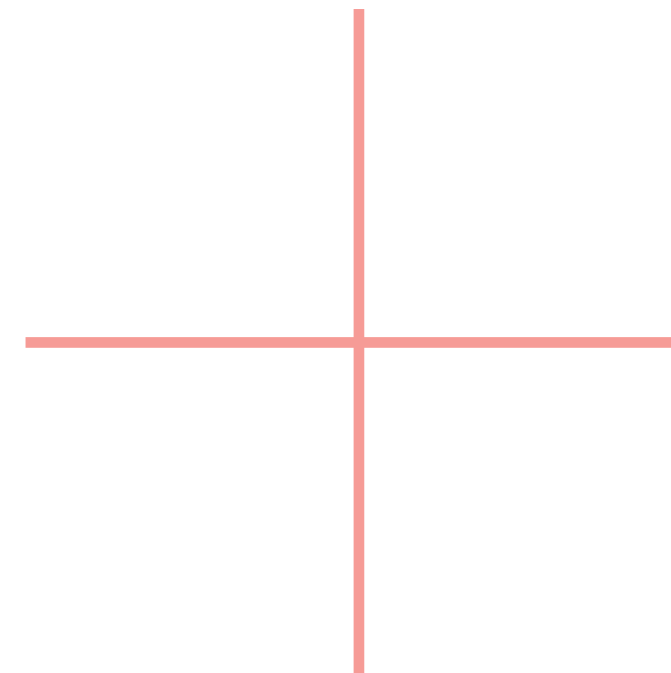


We have identified the following key principles to guide the implementation of our social procurement commitments across our business and in the projects we deliver:

- + Use an evidence-based approach to identify priority groups we believe should have access to opportunities created by each individual project we are delivering
- + Incorporate social and sustainable outcomes that benefit the communities in which we are working into our value-for-money considerations when engaging with suppliers
- + Support the growth and development of the Social Benefit supplier market
- + Encourage our entire supply chain to deliver sustainable and social outcomes
- + Leverage existing Federal, State and Local Government programs to support the delivery of our social procurement commitments
- + Maintain a reporting and governance framework to oversee the implementation of our social procurement plans

Delta Group monitors and reports on project specific social procurement outcomes, including (but not limited to):

- + Local labour workforce breakdown
- + Social benefits supplier expenditure
- + Social benefits supplier workhours
- + Apprentice and trainee workhours
- + Intern, cadet and graduate workhours
- + Female workhours





Widi Ngaruwa

Delta Group is a growth partner of Supply Nation certified contractor, Widi Ngaruwa, representing a majority owned, managed and controlled Aboriginal business. With a mission to provide long term Aboriginal job prospects and trade apprenticeships, as well as to provide clients with a practical and meaningful pathway for engaging Aboriginal Australians and small Aboriginal businesses, Widi Ngaruwa offers NPI building and construction, civil, demolition and remediation services.



Eather Group

Delta Group has forged a close and highly productive commercial partnership with Aboriginal owned and Supply Nation certified cart and disposal contractor, Eather Group in NSW. In addition to contracting haulage and road transport services, Delta Group rents 5,000m2 of land from Eather Group to store plant and equipment and provides support on major project bids as well as project management expertise. Delta subsidiary CMA Contracting also engages Eather Group and Yunanga Civil & Earth for the delivery of specialist industrial project services in the Hunter Valley.



Flicker of Hope

In 2018, Delta Group joined the Petropoulos family as a foundation partner of the Flicker of Hope foundation. Flicker of Hope has been established to raise much needed funds for research into neurofibromatosis (NF) – a genetical disorder that affects up to 10,000 Australians and which causes tumours to grow on nerve endings throughout the body – for which there is no cure. With Delta's support, Flicker of Hope has raised more than \$3.5m to date, with 100% of all funds going directly to essential research into NF.



Port Melbourne Football Club

Established in 1874, the Port Melbourne Football Club – or the “Borough” as it is colloquially known – is one of the oldest football clubs in Australia, with 18 VFL/VFA and VFLW premierships. Since relocating to our Port Melbourne head office and yard in 1993, Delta Group and the Borough have been close neighbours and formalised a sponsorship agreement in 2022 that focused on the women's team in the newly formed VFLW competition – and which celebrated their inaugural premiership in 2023.



UTS Australian Football Club

Since it was formed in 2000, the UTS Australian Football Club – or the “Bats” – has grown to become one of the largest and most successful clubs in Sydney, winning an impressive 16 premierships across multiple grades. Today, the Bats field eleven men's and women's teams and are the biggest club in the Eastern Suburbs. With a shared commitment to excellence and strong links to the next generation of engineering talent, Delta Group found a natural partner in the Bats and committed to a sponsorship of the Club in 2024.

/ Governance

Delta Group is a privately owned company comprising subsidiary entities as well as related entities incorporated and domiciled in Australia.

We are committed to maintaining a high standard of integrity and good corporate governance, including playing a leadership role in setting and articulating corporate governance standards in Australia and for the Australian building and construction sector.

Sustained revenue growth and a strong balance sheet reinforces our capacity to deploy capital in upgrading or expanding our fleet, as well as to offer bank securities, guarantees and/or surety bonds to meet any client or project specific requirement. Delta Group hold the relevant insurances in accordance with best practice risk management and corporate governance protocols.

As the largest contractor of its type in Australia, Delta Group has the financial, organisational and operational capacity to manage hundreds of projects at any one time - metro, regional, remote or marine

Delta Group is proud to play a leadership role in the continuous development of our industry in Australia and is a long standing and active member of peak industry bodies or associations.

- + Civil Contractors Federation
- + Master Builders Association
- + Waste Management Association of Australia
- + Construction Material Processors Association
- + Institute of Quarrying Australia
- + Victorian Transport Association
- + Demolition & Asbestos Industry Association of Victoria
- + Social Traders

Integrated Management System

We maintain triple ISO certified quality, safety and environmental management systems, ISO certified risk management systems, and are accredited under the Australian Government Building & Construction WHS Accreditation Scheme, as well as individual State and Territory Government accreditation and prequalification schemes.

A custom built IMS captures and shares commercial IP from Delta Group project sites across Australia, giving us the capability to aggregate and analyse data relating to quality, health and safety, environmental and risk performance from past and current projects.

The design and function of Delta Way is process-focused through the documentation of knowledge and skills centred on workflows and individual tasks to safely and successfully execute an agreed scope of works.

It is the basis upon which our business and operating divisions function – a carefully structured and formal operations system that has been designed to ensure full compliance with our statutory and regulatory obligations, as well as to:

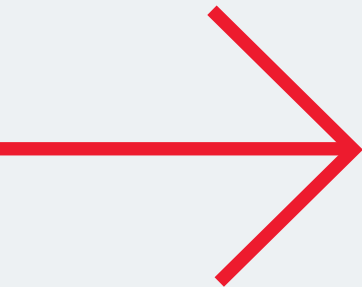
- + Design and implement policy
- + Track and measure performance
- + Establish and describe responsibilities and accountabilities
- + Facilitate continuous improvement

Code of Conduct

Everything we do in our offices and on our project sites centres upon our Code of Conduct which sets out the fundamental rules and values that govern the way we operate as a company. It applies equally to our employees as well as subcontractors and identifies three core elements – working in a safe and sustainable manner; acting openly, fairly and with integrity; and believing in our people and teamwork.

Behavioural Safety

Nothing matters more to us than safety. It is our most important business practice and we demand visible leadership at every stage of a project and from everyone involved. We believe that safe work practices are influenced by behaviour, not authority, which is why we custom built our own *Right First Time* behavioural safety program. *Right First Time* is based on four key values: Safety, Integrity, Teamwork and Excellence. It is dedicated to empowering our people to STOP and THINK about what they are doing, even if they have performed a task hundreds of times before.



Sustainability Reporting

Delta Group and all related entities are compliant with the relevant Commonwealth and State or Territory legislation, as they relate to our diversified contracting services and sustainable business practices.

- + Climate-related financial disclosures
- + Scope 1 and Scope 2 CO² emissions monitoring
- + NGER, Green Star and NABERS aligned reporting systems
- + Green Star certified waste transfer facilities
- + Comprehensive waste stream tracking, docketing, tipping and invoicing systems
- + NATA tested and certified eco-products
- + GPS vehicle tracking
- + Licensed landfill and cleanfill disposal

Modern Slavery

Delta Group welcomes the opportunity to join the Australian Government to eliminate modern slavery in global supply chains and to improving the lives of millions of victims around the world. We are committed to challenging ourselves and all of our supply chains at home or abroad. We will remain vigilant for any form of modern slavery and strive to improve our management systems so as to maintain robust and highly transparent commercial supply relationships.

Anti Bribery & Corruption

Our Anti-Bribery and Corruption Policy forms part of our management framework and is a critical component of our corporate vision, mission and values. It outlines Delta Group's requirements regarding the management of gifts and benefits, which protects our reputation and minimises potential negative consequences. The prevention, detection and reporting of bribery and other forms of corruption are the responsibility of all those working for Delta Group or under its control.

Subcontractor Management

Our prequalification processes and operating policies ensure full regulatory and/or statutory compliance and only prequalified subcontractors will be deployed to Delta Recycling sites. To achieve prequalified status subcontractors must adhere to best practice governance and risk management protocols:

- + Financial Performance
- + Insurances
- + Licenses & Accreditation
- + Quality, Safety & Environmental Management
- + Safety Statistics
- + Relevant Experience
- + Key Personnel
- + Plant & Equipment
- + Workplace Gender Equality
- + Social Inclusion & Procurement
- + Modern Slavery
- + Carbon Management
- + Risk Management
- + Regulatory & Statutory Compliance

/ Environmental

Carbon Management

We aspire to play an active role in Australia's transition to Net Zero emissions by 2050. To help inform our own emissions reduction targets, as well as to meet our (and our client's) obligations under the Australian Government NGER Scheme, Delta Group has established an emissions monitoring and reporting system encompassing our diversified contracting services. We currently monitor and report on Scope 1 and Scope 2 emissions, with ongoing development of Scope 3 emissions monitoring in step with government policy settings.

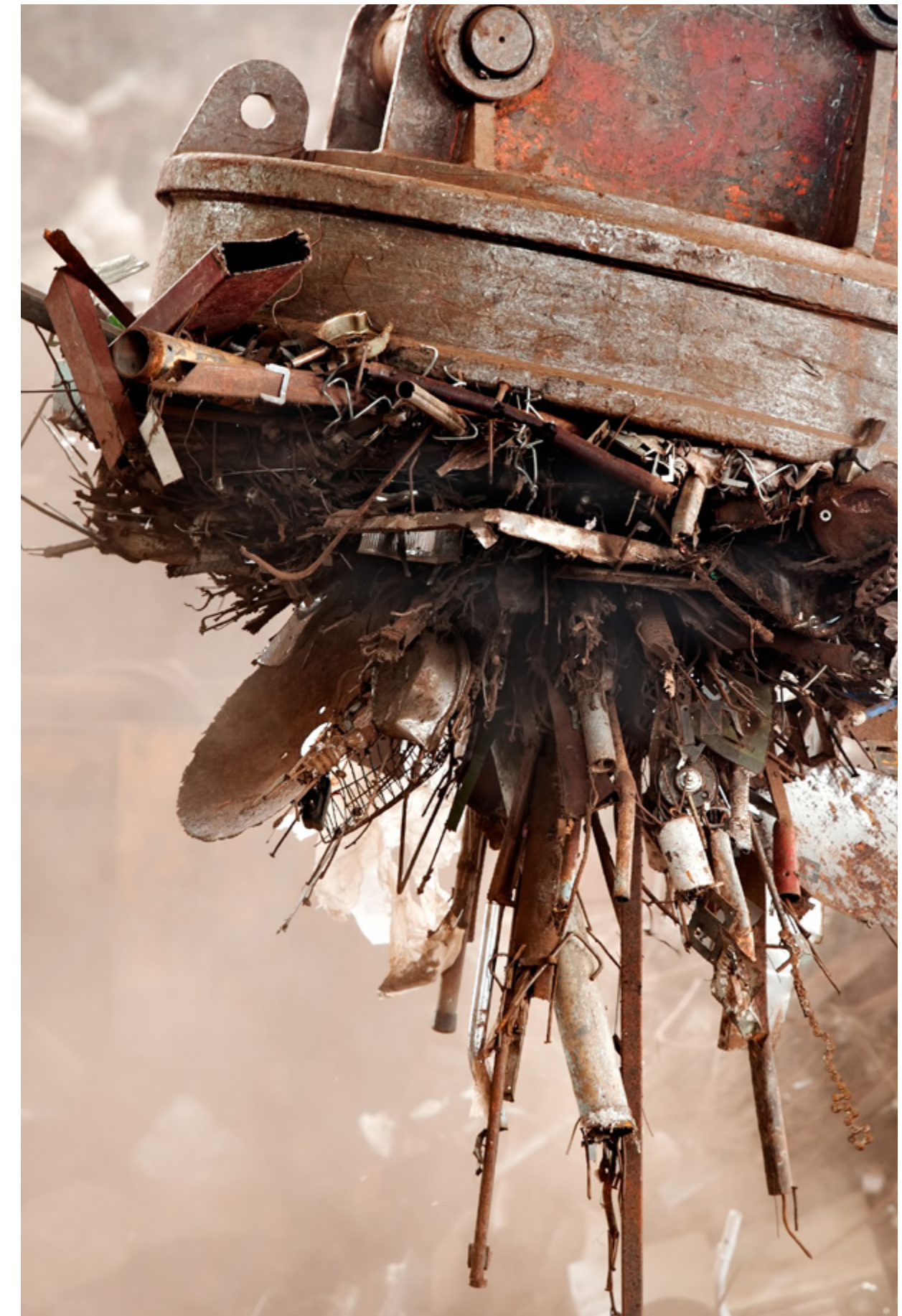
Materials Solution Management

Delta Group is a major shareholder in Eastern Plant Hire (EPH) and Earth Solutions Group (ESG). Founded in 1996, EPH is Australia's largest materials logistics broker and specialises in the collection, cartage and relocation of construction waste materials and spoil in Victoria, New South Wales and Queensland.

Together with its company owned fleet, EPH also acts as an agent for small independent haulage contractors to deliver high quality materials solution management solutions for major infrastructure projects.

From erosion repair to quarry remediation, ESG has been providing land remediation strategies and management solutions, including long term cleanfill sites, to meet the needs of residential, leisure, agricultural and industrial project developments for more than twenty years.

ESG is an industry leader in environmental management and compliance for cleanfill sites and have invested extensively to develop and maintain best practice policies and procedures to satisfy current EPA guidelines.



Company information

Registered Business Name

Delta Recycling Pty Ltd

Trading Name

Delta Recycling

ABN | ACN

84 007 069 801 | 007 069 801

Directors

Con Petropoulos

Management

Dominic Santullo, General Manager

Registered Office Address

577 Plummer Street, Port Melbourne VIC 3207

- p +61 3 9646 8277
- f +61 3 9646 6877
- e recycling@deltagoup.com.au
- w deltarecycling.com.au

Offices

HEAD OFFICE Melbourne

577 Plummer Street, Port Melbourne VIC 3207
p. 03 9646 8277
e. recycling@deltagoup.com.au

VIC

Sunshine

473 Somerville Road
Sunshine VIC 3020
p. 03 9646 8277
e. recycling@deltagroup.com.au

Latrobe Valley & Gippsland

25 Hotham Street
Traralgon VIC 3844
p. 03 9646 8277
e. delta@deltagroup.com.au

SKIPZ Recycling – Melbourne

635 Glenferrie Road
Hawthorn VIC 3122
p. 1300 335 822
e. info@skipzrecycling.com.au

QLD

Hamilton

Suite 1, Level 3, 33 Remora Road
Hamilton QLD 4007
p. 07 3268 5395
e. recycling@deltagroup.com.au

SKIPZ Recycling – Brisbane

5/31 Brownlee Street
Pinkenba QLD 4008
p. 1300 335 822
e. info@skipzrecycling.com.au

SHAPING TOMORROW SHAPING TOMORROW SHAPING TOMORROW SHAPING TOMORROW SHAPING TOMORROW



deltarecycling.com.au